



Republic of the Philippines
Department of Education
National Capital Region
DIVISION OF CITY SCHOOLS
Quezon City, Metro Manila



August 30, 2012

MEMORANDUM TO:

Asst. Schools Division Superintendents
Division/District Supervisors
Elementary and Secondary School Principals
Head Teachers and Teachers In-Charge

7th GRAND REGISTRATION RALLY

For the information and guidance of all concerned, attached is a letter from Ms. Edna B. Azurin, Council President, Quezon City Girl Scout Council, Quezon City, re: 7th Grand Registration Rally of the Quezon City Girl Scout Council, which will be held on September 14, 2012 at the Quezon City Memorial Circle from 6:30 am to 12:00 pm.

Immediate and wide dissemination of this Memorandum to all concerned is desired.

CORAZON C. RUBIO, CESO VI
Schools Division Superintendent

Incl.: As stated

439TH ARAW NG PASIG 2012

DRUM & LYRE COMPETITION

Mariano Eusebio Quadrangle

APPLICATION FORM

Name of Drum & Lyre Band _____
City _____
Band Master _____ Tel. _____ Fax No. _____
Number of band members/majorettes _____

CRITERIA to be used to determine the winners:

1. Minimum of 30 – Maximum 60
Entry march free choice
Medley
Exit soft roll of drums
2. The band should not exceed a total playing time of 12 minutes; time starts at entry march and ends at medley. A penalty of 1 point will apply for every minute. The band should immediately exit after playing the medley. Band members, inclusive majorettes, should not be more than 60 members total.
3. The band to exit at designated points where snacks will be served. Discipline at exit is part of the scoring.
4. Prizes will be awarded as soon as the panel of judges have tallied and collated their scores.
5. Panel of Judges (3 members) to be known and introduced only at the start of the program. There will be no tie. Decision of the panel of judges will be final.
6. The Drum & Lyre band will play according to the number drawn earlier. The band **MUST** immediately march as their number is called.
7. Deadline for submission of entries is on June 15, 2012

SCORING will be on the basis of 100%

Music – Musical Arrangement/Tonal quality/Piece Timing	50
Visual – Showmanship/Choreography/Synchronization/Drill	40
Audio Visual – General Effect	10
TOTAL	100 %

For further inquiries pls. contact Ms. Estelita V. Masbad, Teresa Ladrillo & Mr. Joseph Martin of the Pasig City Business Center office at telephone numbers 628-0365/3767

QUEZON CITY GIRL SCOUT COUNCIL

D. Tuazon St., Brgy. Lourdes, Sta. Mesa Heights, Quezon City
Telefax No. 414-5174

Council Board Officers 2012 - 2015

EDNA B. AZURIN
President

BELEN I. CASTRO
Vice-President for Field

CHARITO L. PLANAS
Vice-President for Ways & Means

WILMA A. SARINO
Vice-President for International Participation

PORFIRIA B. SANTOS
Secretary

FE F. MAGALLANES
Asst. Secretary

MYRNA S. GARRIDO
Treasurer

NELL C. MADARANG
Asst. Treasurer

TEOFISTA L. PAJARA
Auditor

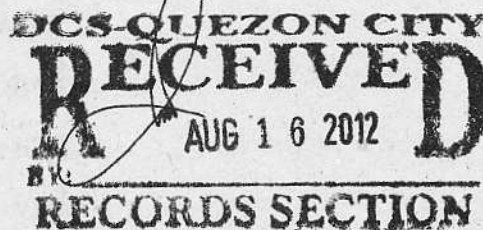
CORAZON C. RUBIO
Commissioner for Administration

SUSANA S. LUCENO
Commissioner for Program

ILDEFONSA M. BENIG
Commissioner for Training

HERBERT M. BAUTISTA
BSP Chairman

DR. CORAZON C. RUBIO
City School Division Superintendent
Division of City Schools
Quezon City



Dear Dr. Rubio:

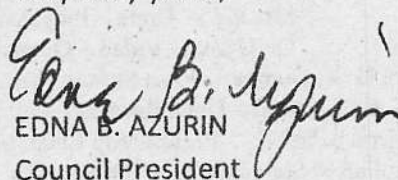
We are writing to you with regards to the 7th Grand Registration Rally of the Quezon City Girl Scout Council.

Due to bad weather and holidays, may we reschedule the event from August 31, 2012 to September 14, 2012 at the Quezon Memorial Circle from 6:30 a.m. to 12:00 p.m..

Attached are the committees and program of activities.

We hope for your kind approval regarding this matter. Thank you very much.

Very truly yours,


EDNA B. AZURIN
Council President

QUEZON CITY GIRL SCOUT COUNCIL
D. Tuazon St., Brgy. Lourdes, Sta. Mesa Heights, Quezon City

EVENT: **7th QC GSP GRAND REGISTRATION RALLY AND COUNCILWIDE HIMIGSAYAWITAN**
THEME: **"MUNDONG GINAGALAWAN GAWIN NATING LUNTIAN"**
DATE: **September 14, 2012**
TIME: **6:30 a.m.**
VENUE: **Liwasang Aurora, Quezon Memorial Circle**

COMMITTEES:

- | | | |
|----------------------------|---|--|
| Over-all Chairman | - | Dr. Betty C. Cavo – Asst. Schools Division Superintendent |
| Co-Chair | - | Mrs. Porfiria B. Santos – Division Supervisor |
| 1. Program and Invitations | - | Dr. Proceso T. Lera – Novaliches High School
Dr. Milagros Luang – Melencio Castelo Elementary School
Quezon City Council |
| 2. Physical Arrangement | - | Mrs. Elena B. Bote – Cubao Elem. School
Dr. Cynthia G. Vidad – Quezon City High School |
| 3. Marshalls (Parade) | - | Over-all In-Charge: Dr. Florito Gereña – NOH – School for Crippled Children
Co-Chair: Mrs. Vernalisa Libanan – Aurora A. Quezon Elem. School
CD I – Mr. Pedro Nuestro – Masambong Elem. School
Dr. Sylvia Campos – E. Rodriguez Jr. High School
CD II A – Dr. Edgardo Morales – Placido del Mundo Elem. Sch.
Dr. Luis Tagayun – New Era High School
CD IIB – Dr. Erlinda Guarnes – Damong Maliit Elem. Sch.
Mrs. Angelita Regis – Bagong Silangan High Sch.
CD III – Dr. Almeda Maestro – Juan Sumulong High Sch.
Ms. Edna Isorena – Libis Elem. School
CD IV – Mrs. Thelma Co – Kamuning Elem. Sch.
Dr. Maximo Placio – Flora Ylagan High Sch. |
| 4. Peace and Order | - | Chairman – Dr. Crispin D. Duka – MSEP/MAPEH Division Supervisor
Co-Chair – Dr. Felicisima F. Tañedo – Sergio Osmeña Sr. High Sch.
CD I – Mr. Randy Tagaan – San Francisco Elem. Sch.
Mrs. Emma Quintana – San Jose High School
CD II-A – Mr. Noel D. Bagano – L. R. Pascual Elem. School
Mrs. Ruby De Jesus – T. Sora National High Sch.
CD II-B – Mr. George C. Melegrito – Lupang Pangako Elem. Sch.
Mr. Agapito T. Lera – Judge F. Belmonte Sr. High Sch.
CD III – Mr. Julio R. Villapa – Batino Elem. Sch.
Dr. Levita U. Ramos – Quirino High Sch.
CD IV – Mrs. Janet D. Dionio – Krus Na Ligas High Sch.
Mrs. Merlin N. Villegas – Camp Crame Elem. School |
| 5. Documentation | - | CD I – Dr. Victoria B. Mangosong – E. Rondon High Sch.
Dr. Adela Salvador – Bago Bantay Elem. Sch.
CD II-A – Mrs. Delia Sibulo – Balumbato Elem. Sch.
Mrs. Lydia Ramos – Ismael Mathay Sr. High Sch.
CD II-B – Mrs. Lilia Garcia – Lagro Elem. Sch.
Dr. Sheridan Evangelista – North Fairview High School
CD III – Mr. Gerry F. Isip – Old Balara Elem. School
Dr. Lucia Herrera – J.P. Laurel High Sch.
CD IV – Mr. Jay V. Ureta – Pinyahan Elementary School
Dr. Cynthia Vidad – Quezon City High School |
| 6. Reception | - | Dr. Elvira D. V. Dumlao – Rosa Susano Elem. School
Mrs. Rosario J. Sicam – Doña Rosario Elem. Sch.
Ms. Maricris S. Santos – P. Bernardo Elem. Sch.
Mrs. Caroline S. Sonquit – Proj. 3 Elem. Sch.
Dr. Modesto Villarin – San Bartolome High Sch.
Mrs. Zaida M. Padullo – Holy Spirit National High Sch.
Dr. Sally B. Barcelona – Commonwealth High School
Dr. Diego M. Amid – Batasan Hills National High Sch.
Dr. Eladio H. Escolano – Don A. Roces Sr. Scn. & Tech. High Sch.
Mrs. Olivia E. Dagdag – Camp Gen. E Aguinaldo High Sch.
Mrs. Marissa N. Rodriguez – Manuel Roxas High Sch.
Dr. Zenaida Y. Arao – Dr. Josefa Jara Martinez Voc. High Sch. |
| 7. Food & Stage Décor | - | Council |
| 8. Attendance | - | Field Advisers / QC Council |
| 9. Coordinators | - | CD I – Myrna Arce – Field Adviser, Bayanihan Elem. School
Evelyn Villar – Field Adviser, Sergio Osmeña Sr. High School
CD II A – Minelva Lanuza – Field Adviser, P. Tamo Elem. School
CD IIB – Maria Luz Buclatan – Field Adviser, Commonwealth Elem. Sch.
CD II A – Marilyn Espedido – Novaliches High Sch.
CD III – Gina Burce – Field Adviser, Cubao Elem. School
Irma Maganis – Field Adviser, Juan Sumulong High School
CD IV – Wayaway Subia – Field Adviser, Aurora A. Quezon Elem. Sch.
Leonora Lauigan – Field Adviser, Ramon Magsaysay High School |

Council – Dr. Susana S. Luceño, Commissioner for Program, Novaliches H/S
Lala M. Pedrera – Council

10. Emcee

Mrs. Rebecca Rivera – Payatas B Elem. School
Dr. Eloisa E. Opeña – Gen. Roxas Elem. Sch.
Mrs. Myrna H. Romarate – Sauyo Elem. School

ACTIVITIES

PART 1 PARADE

- Assembly time – 6:30 a.m.
 - Assembly area – Quezon City Circle, Philcoa Gate
 - General Order of Parade
 - Tarpaulin with the theme
 - CD Banner with balloons
 - Drum and Lyre
 - Girl Scouts and Leaders with GSP flag/school flag
- Drum and Lyre:
- | | | |
|---------|---|--|
| CD I | - | Project 6 Elem. Sch. Drum & Lyre |
| CD II-A | - | GSIS Elem. School Drum & Lyre |
| CD II-B | - | President Corazon C. Aquino Elem. Sch. Drum & Lyre |
| CD III | - | Libis Elem. School Drum & Lyre |
| CD IV | - | Ramon Magsaysay High School Drum & Lyre Band |
- After the parade there will be yell per CD

PART 2 TENTATIVE OPENING PROGRAM

- | | |
|---|---|
| a. Pambansang Awit | Pangkat Kawayan – A. A. Quezon ES |
| b. Panunumpa sa Watawat ng Pilipinas | Commonwealth Elem. School |
| c. Panalangin | Novaliches High Sch. |
| d. Pangako at Batas ng Girl Scout | |
| Twinkler | Cubao Elem. School |
| Star | D. Tuazon Elem. Sch. |
| Junior | Lagro Elem. School |
| Senior | San Francisco High School |
| e. Pambungad na Pananalita | Dr. Edna B. Azurin |
| f. Pagpapakilala ng mga Kalahok | Pangulo ng Quezon City Girl Scout Council |
| | Dr. Susana S. Luceño |
| | Commissioner for Program |
| g. Na-atanging Bilang | Pangkat Kawayan A. A. Quezon ES |
| h. Pagpapakilala sa Panauhing Pandangal | Mrs. Belen J. Castro |
| | Pangalawang Pangulo – QC GSP |
| i. Mensahe | Kgg. Ma. Josefina B. Alimurung |
| | Pangalawang Punong Lungsod |
| | Kgg. Herbert M. Bautista |
| | Punong Lungsod |
| j. Paghamon | Dr. Corazon C. Rubio |
| | City Schools Division Superintendent at |
| | Commissioner for Administration |

PART 3 Councilwide HIMIGSAYAWITAN

Star Level – Rhythm Band – Leron-Leron Sinta
Junior Level – Choral Competition – Escoda Hymn
Senior Level – Folk Dance Competition – Binasuan

- Note: Elimination by district:
 - CD I – Aug. 17, 2012, 1:00 p.m., San Jose Elem. School
 - CD IIA – Aug. 29, 9:00 a.m. - Novaliches H/S for Senior Level
 - CD IIA – Aug. 17, 8:00 a.m. - P. Tamo Elem. Sch. for Elementary Level
 - CD IIB – Aug. 24, 1:00 p.m, Sacred Heart Academy of Novaliches for Elem. And High School
 - CD III – Aug. 20, Libis Elem. School
 - CD IV – Aug. 27, 2012, 9:00 a.m. Aurora A. Quezon Elem. School for Star & Junior Levels

PART 4 CLOSING AND AWARDING CEREMONY

GUIDELINES FOR THE COUNCIL HIMIGSAYAWITAN 2012

I - Star Scouts Rhythm Band Competition - Leron Leron Sinta (Ref.-Sing along with the Girl Scouts Vol. I-CD)

1. Open to all registered Star Scouts.
2. The band must be composed of at least 18 members but not more than 30 members.
3. They should be in complete and correct Girl scouts uniform.
4. The instrument to be used are improvised instrument such as bottles, sand papers, bottle caps and wooden sticks. Any other sound producing things left to the discretion of the leader or coach. Only a maximum of two (2) of the following instruments: bandurias, marimba, guitar, lire and the like maybe included in the band.
5. There are no vocal parts allowed in the rendition of the piece.
6. The time allotted for the selection should not be more than seven (7) minutes.
7. The piece should be memorized.
8. Points of judging:

Interpretation (tempo, rhythm, musical arrangement, style) -----	40%
Dynamic and melody -----	40%
Organization (instrument used, props) -----	10%
Over-all impact -----	10%
	100%

9. Decision of the board of judges is final.

II - Junior Scout Choral Singing Competition-ESCODA Memorial Hymn (Ref.-Sing along with Girl Scouts Vol. I - CD)

1. Open to all registered Junior Girl Scouts.
2. The group must be composed of 12-16 members.
3. They should be in complete and correct Girl Scouts uniform.
4. There should be no soloist and child conductor.
5. Accompaniment is limited to piano, organ or guitar or the group can sing acapella.
6. The song must be memorized.
7. Blocking maybe allowed
8. Points of judging:

Interpretation (tempo, rhythm, style) -----	40%
Dynamic (melody) -----	40%
Over-all impact -----	20%
	100%

9. Decision of the board of judges is final.

III - Senior Scout Folk Dance Competition - Binsuan (Ref. - Philippine Folk Dance by Francisca Reyes Aquino. Vol. 4)

1. Open to all registered Senior/Cadet Girl Scouts.
2. The dance group shall be composed of 8-12 members.
3. No part of the group dance maybe interpreted by a solo dance or pair.
4. The dance group shall present *only the contest piece*.
5. Points of judging:

Authenticity -----	15%
Costume -----	10%
Stage Presence -----	15%
Rhythm, Tempo and Coordination -----	30%
Grace and Fluidity or Movement -----	30%
	100%

6. Decision of the board of judges is final.

BINASUAN

(Pangasinan)

(Senior)

Binasuan is very colorful and spectacular dance from Bayambang, Pangasinan. It also means drinking glass. *Binasuan* in Pangasinan means *with the use of a drinking glass*.

In this dance, the dancer displays good balance, graceful movements, and unusual skill. She dances with three glasses half-full of water, one on her head, and one held on the palms of her hands. She shows her skill in maneuvering the glasses, particularly when she executes continuous fast turns, sitting, and rolling on the floor without spilling the water or dropping the glasses.

Binasuan is usually danced only by one girl, but sometimes two or three or more girls may dance it in group formation.

COSTUME. *Balintawak* costume with *tapis* and soft *pañuelo*.

MUSIC is composed of two parts: A and B. It is danced to the tune of *Pangasinan*.

COUNT one, two, three to a measure.

FORMATION. Dancer enters from one side of the room or place where the dance is to be performed and stops at center, facing front.

NOTE: Throughout the dance the glasses are kept in proper places; on head, on palms of hands.

ENTRANCE

Music A. Play first time.

Dancer enters from left or right side with one glass on her head and one glass each on the palms of her hands.

Starting with R foot, take eight waltz steps forward to center of room or stage. Hold glasses in front, elbows close to waist. Move R hand up to chest level and down at waist or hip level alternately and L hand down at hip or waist level and up to chest level alternately, that means that when the R hand goes up to chest level, the L hand goes down to hip level on one count and reverse movement on the next count and so on for eight measures

— I —

Music A. Play second time.

Waltz sideward R and L alternately, eight times. Raise R hand to head level and L hand at hip or waist level when waltzing sideward right. Change position of hands at every measure. There is a slight movement of hands upward and downward with R hand and downward and upward with the L-hand, alternately at every count

— II —

Music B. Play two times.

(a) Starting with R foot, take four waltz steps obliquely forward right. Raise R hand obliquely upward at head level, L hand down at hip or waist level for four measures. Both hands are moving slightly upward and downward alternate-

— III —

Music A. Play two times.

As the following steps are being done, the dancer moves counterclockwise.

(a) Step R forward (ct. 1), brush L forward (ct. 2), step L close to R (ct. 3). Repeat same (cts. 1, 2, 3). Raise R hand at head level, L hand at waist level. Do not move hands.

(b) Waltz turn right (using two waltz steps). By this time the dancer has covered one-fourth of an imaginary circle. Hold glasses in front at waist level, knees close to waist.

(c) Repeat (a), and (b) three more times moving counterclockwise. Finish in proper place, facing front.

— IV —

Music B and A. Play two times each part.

(a) Place weight on L foot, R foot close to L, heel slightly raised. Turn R hand counterclockwise, going gradually upward to overhead. L hand is down at hip level.

(b) Reverse turn of R hand, going gradually downward to original position. Same position of L hand.

(c) Repeat (a) and (b).

(d) Transfer weight to R foot, L heel slightly raised. Repeat all (a-c) with hand reversing turn. R hand is down at side at hip level.

— V —

Music B. Play two times.

(a) Execute as many fast (whirl) turns in place clockwise (tiny steps in place, both feet flat on floor). Hold glasses obliquely forward at chest level without moving hands. Do not hold elbows too close to waist. Finish facing front.

(b) Repeat (a), turning counterclockwise.

— VI —

Music A. Play two times.

(a) Step R sideward (ct. 1), brush L forward (ct. 2), step L close to R. (ct. 3). Repeat same two more times (2 M). Step R sideward (ct. 1), brush L forward (cts. 2, 3). Raise R hand at head level, L hand sideward at waist level or a little bit below waist. Do not move hands.

(b) Repeat (a), starting with L foot, going sideward left, reverse position of hands.

(c) Repeat (a) and (b).

— VII —

Music B. Play three times. Music A. Play two times.

(a) Kneel on R (1 M), kneel on L (1 M), side sit on left (1 M), stretch both legs sideward right and place back of L hand on floor in front (1 M).

(b) Turn R hand counterclockwise and raise gradually to overhead as in Figure IV (a).

(c) Reverse turn of R hand, going gradually downward to original position as in Figure IV (b).

(d) Repeat (b) and (c).

— VIII —

Music B. Play three times.

(a) Place R elbow on floor in front (1 M), stretch L leg backward (1 M), lie down on stomach and at the same time stretch R leg (1 M), place L elbow on floor in front (1 M)

(b) Roll over to right side — Lift L elbow and twist body toward right side (1 M), roll on back and place L elbow on floor (1 M), lift R elbow and twist body toward the right side (1 M), roll over on front to be in prone-lying position (1 M). All the time head is kept erect, and palms of the hands up without spilling water from glasses or dropping glasses

(c) Repeat (b)

(d) Repeat (b) and (c) rolling to left side. Reverse direction and hand positions.

(e) Return to right side-sit position — Bend knees (1 M), raise L elbow and slowly raise trunk (1 M), raise R elbow and trunk erect (1 M), stretch legs sideward (1 M)

— IX —

Music A. Play two times.

Repeat Figure IV (a) and (b), R and L hands doing the movements simultaneously. As the R hand goes up, the L hand goes down and vice-versa. The R hand goes up first (4 M), then as it goes down the L hand goes up at the same time (4 M). Change position of hand every four measures. Finish with L hand

— X —

Music B. Play two times.

(a) Assume standing position — Bend both knees, both hands down at waist level (1 M), kneel on both (1 M), half-stand on R foot (1 M), stand on both feet (1 M)

(b) Repeat Figure V (a) fast (whirl) turns clockwise (6 M) and (b) fast (whirl) turns counterclockwise (6 M)

EXIT

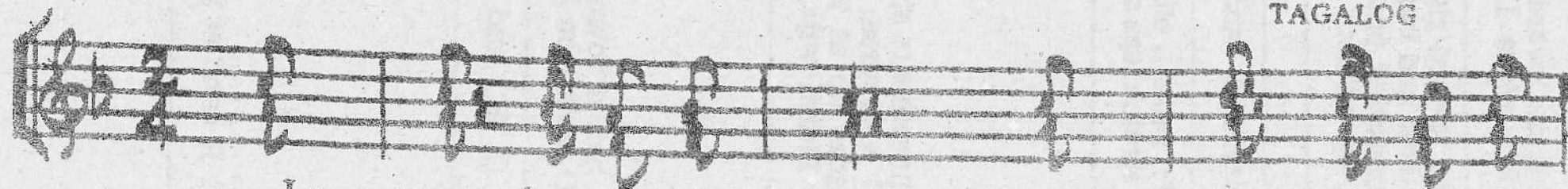
Music B. Play once or twice.

Starting with R foot, execute close steps forward to exit. R hand at head level, L hand at hip level. Do not move hands

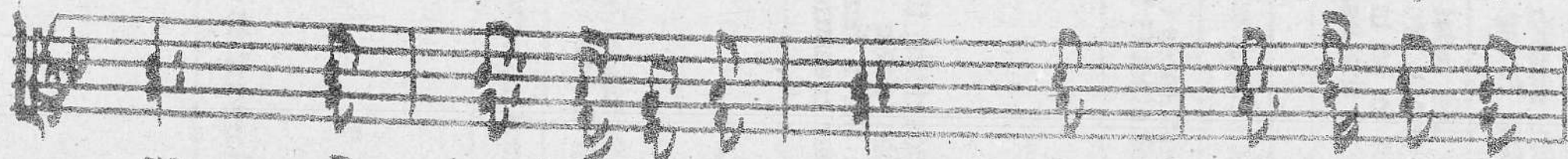
LERON-LERON SINTA

(Slow)

TAGALOG



Le - ron, le-ron sin - ta bu - ko ng pa - pa -



ya. Da - la, da-la'y bus - lo, Si - sid - lan ng sin -



ta Pag - da - ting sa du - lo na - ba - li ang sa -



nga, ka - pos ka - pa - la - ran, Hu - ma - nap ng i -

